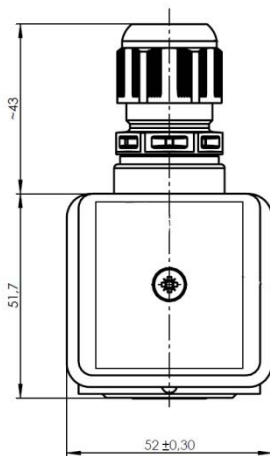


Ex II 2G Ex e mb IIC T6 Gb Ex II 2D Ex tb mb IIC T80°C Db

When this solenoid system is used in combination with "ATEX certified" mechanical components conforming EN 13463-1:2001 and PrEN 13463-5:2000, the entire valve can be used in explosive hazardous environment zone 1 and 21.



ATEX approved encapsulated coil with junction box for gas and dust explosion-hazardous environment.

General data:

Voltage tolerance: - 10...+ 10%

Relative duty cycle: 100 %

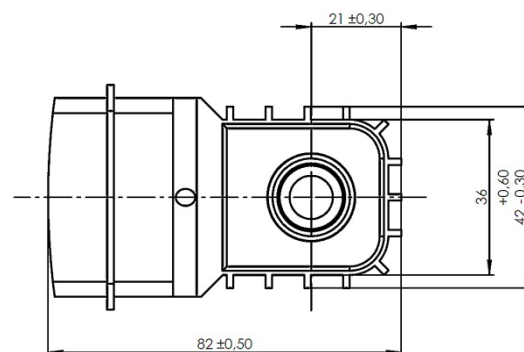
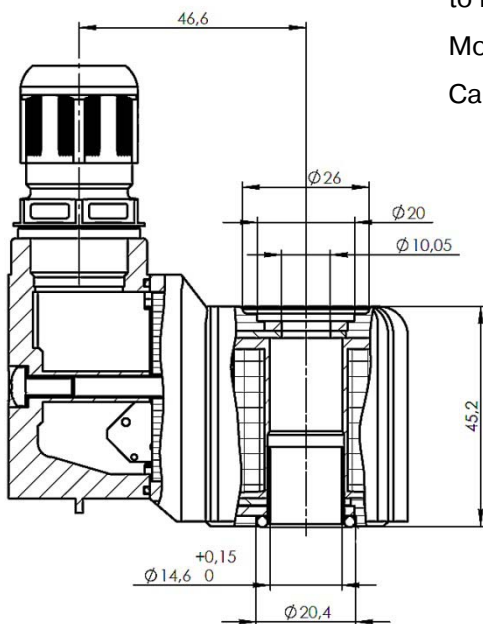
Temperature range: -40°C...+50°C

Insulation class of insulating materials according to DIN VDE 0580: F

Protection with connector according to EN 60529: IP 67

Moulding material: Thermoplastic

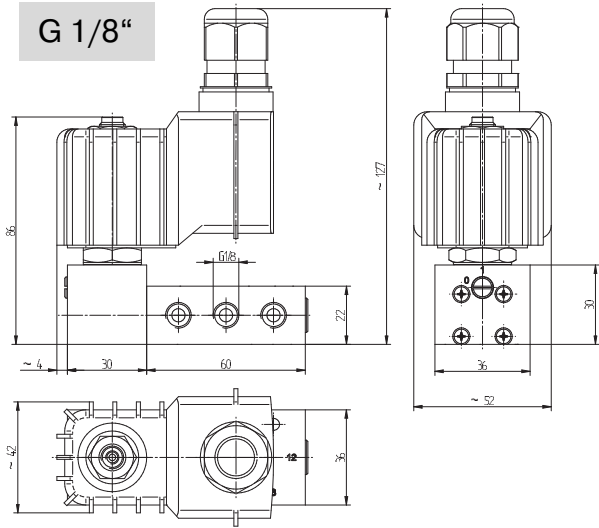
Cable Diameter: 6 – 13 mm



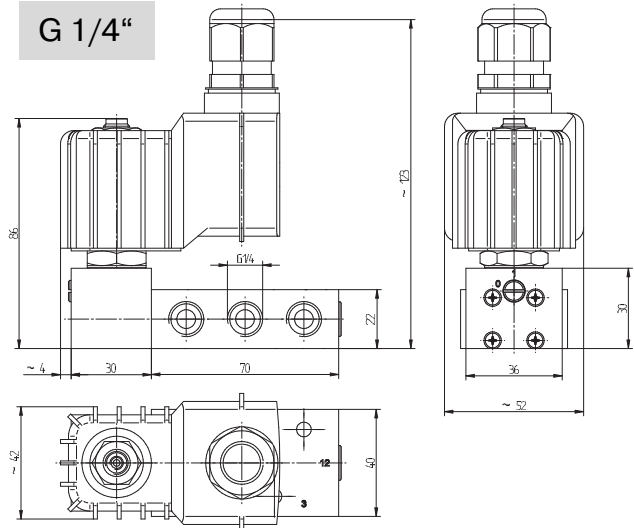
Type	Operating press.	Power consumption	Temperature class
MA 52 EEx e mb IIC T6 24=	max. 10 bar	4,8 Watt	T6 (85 °C)
MA 52 EEx e mb IIC T6 110~	max. 10 bar	4,4 VA	T6 (85 °C)
MA 52 EEx e mb IIC T6 230~	max. 10 bar	4,8 VA	T6 (85 °C)

Please notice:
Same coil can also be used with 24~.

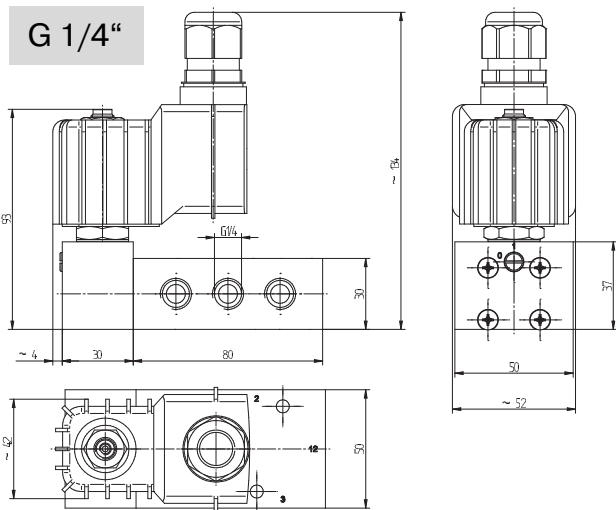
Sample Drawings 5/2-Way Valves



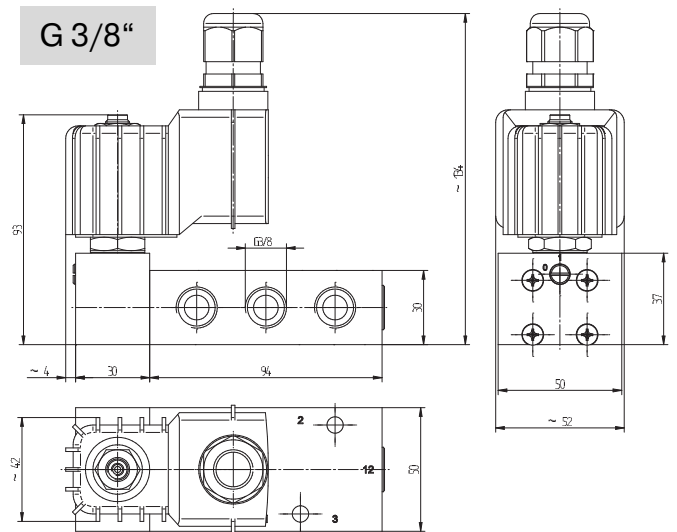
MH 510 501 EEx e mb IIC T6



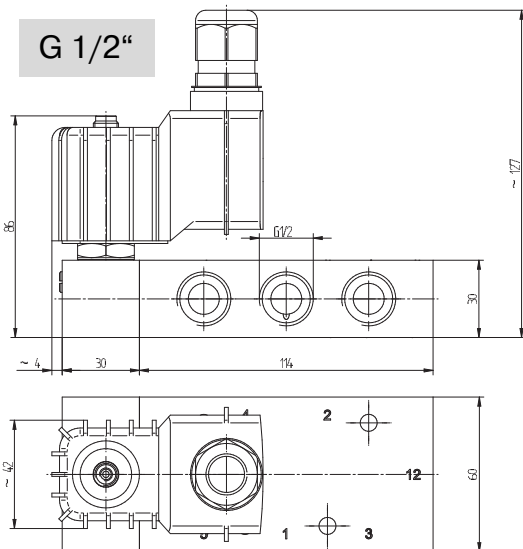
MH 510 701 EEx e mb IIC T6



MH 510 801 EEx e mb IIC T6



MH 510 101 EEx e mb IIC T6



MH 510 121 EEx e mb IIC T6